

# Musical Monsters

**HELP** - Color and cut out pieces.

**RULES** - Place the large pieces in a large circle and the small pieces in a pile facedown.

- Turn on music and have the children walk around the pieces. When the music stops, each child stands on a piece.
- Draw a small piece and the child standing on the matching piece tells everyone something about his costume and gets a treat.
- Make sure every child gets a turn.

BAG

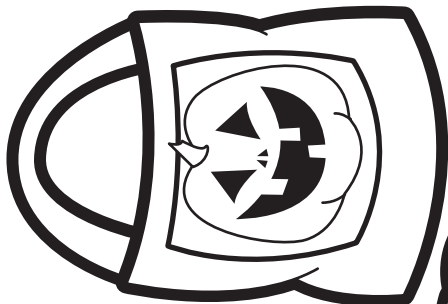
BAT

CAT

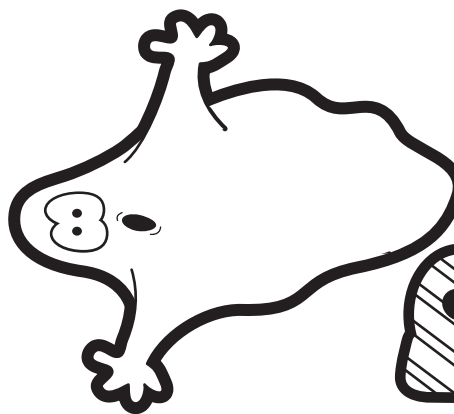
BOO

HAT

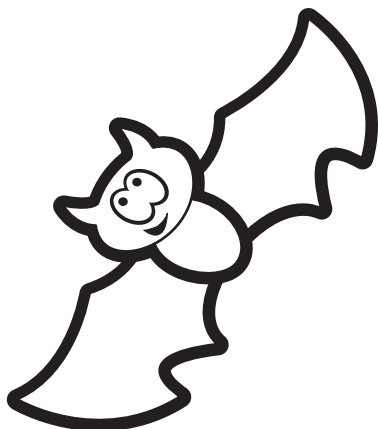
WEB



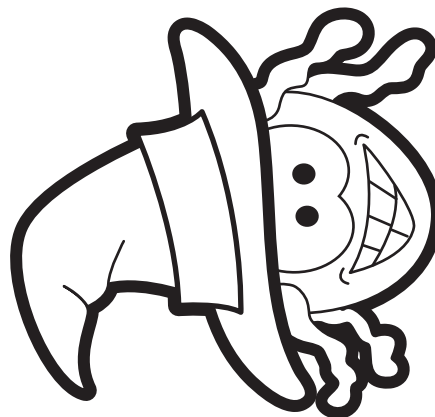
BAG



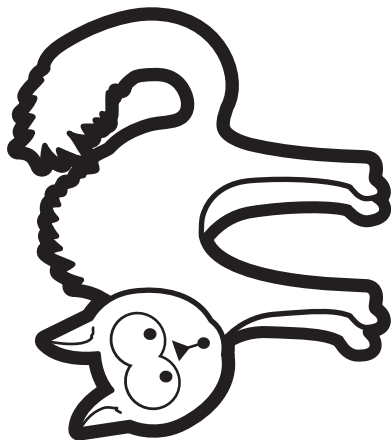
BOO



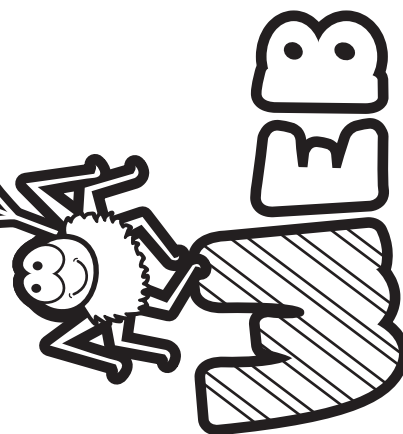
BAT



HAT



CAT



WEB