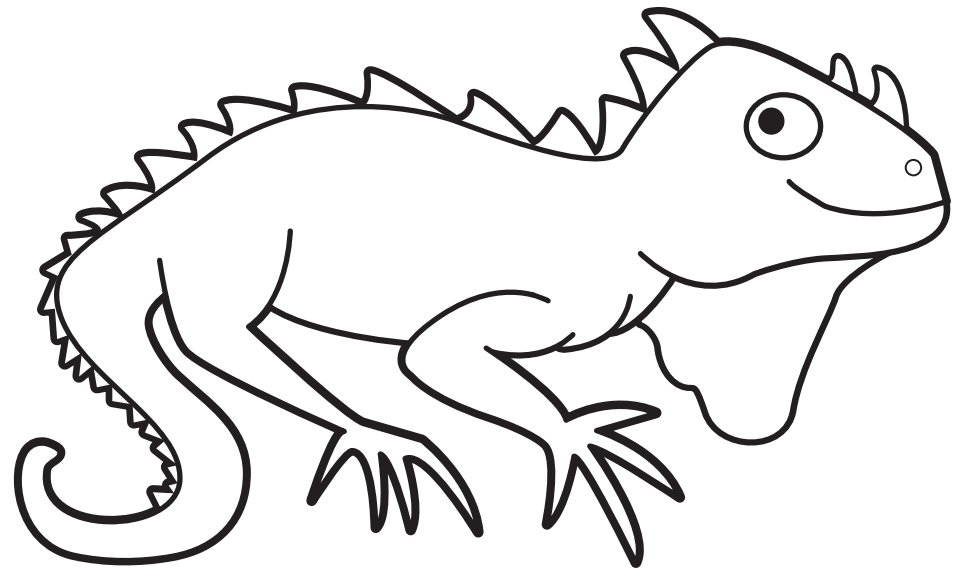


LETTER I

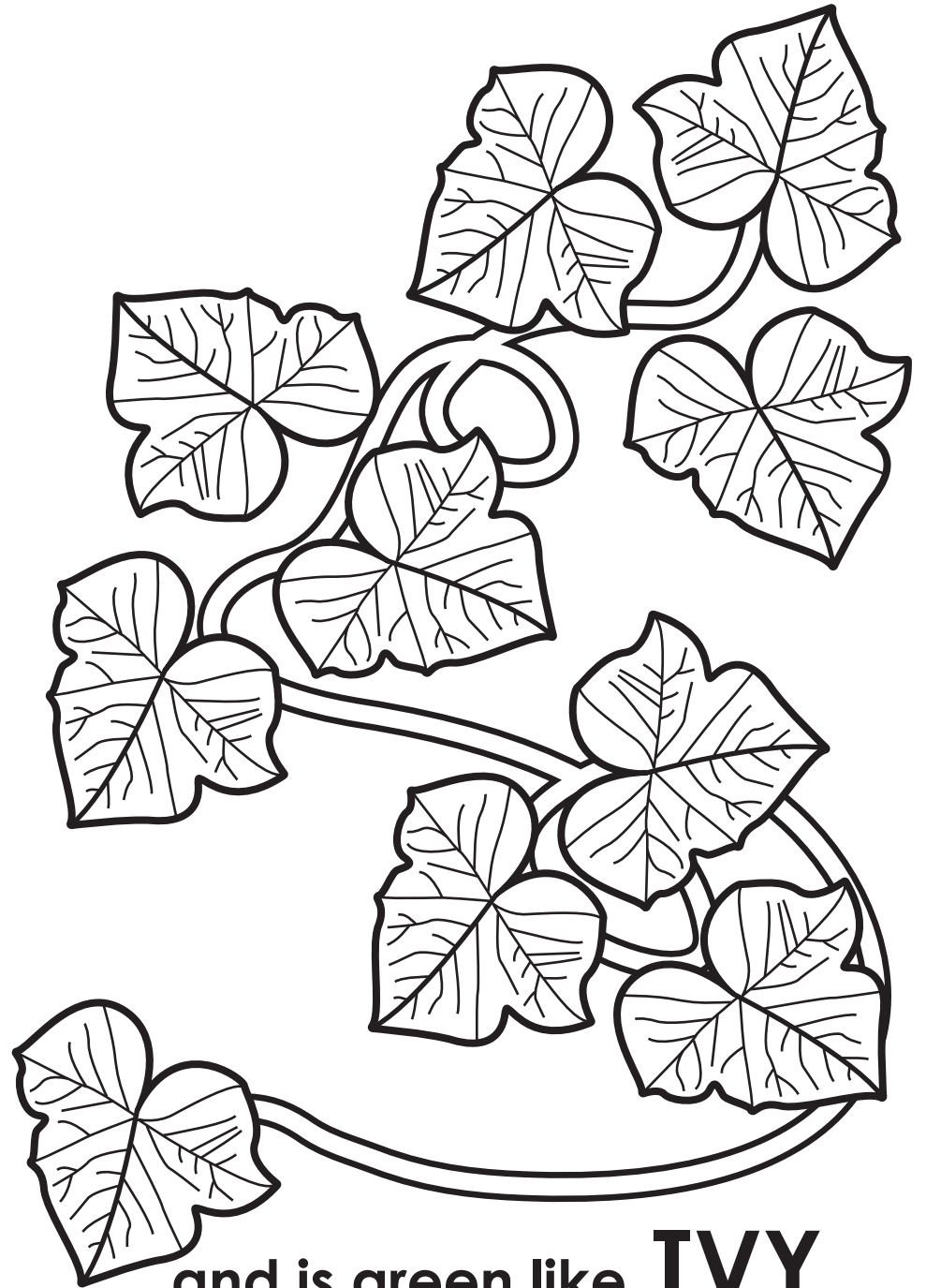
Iggy the Iguana



By:

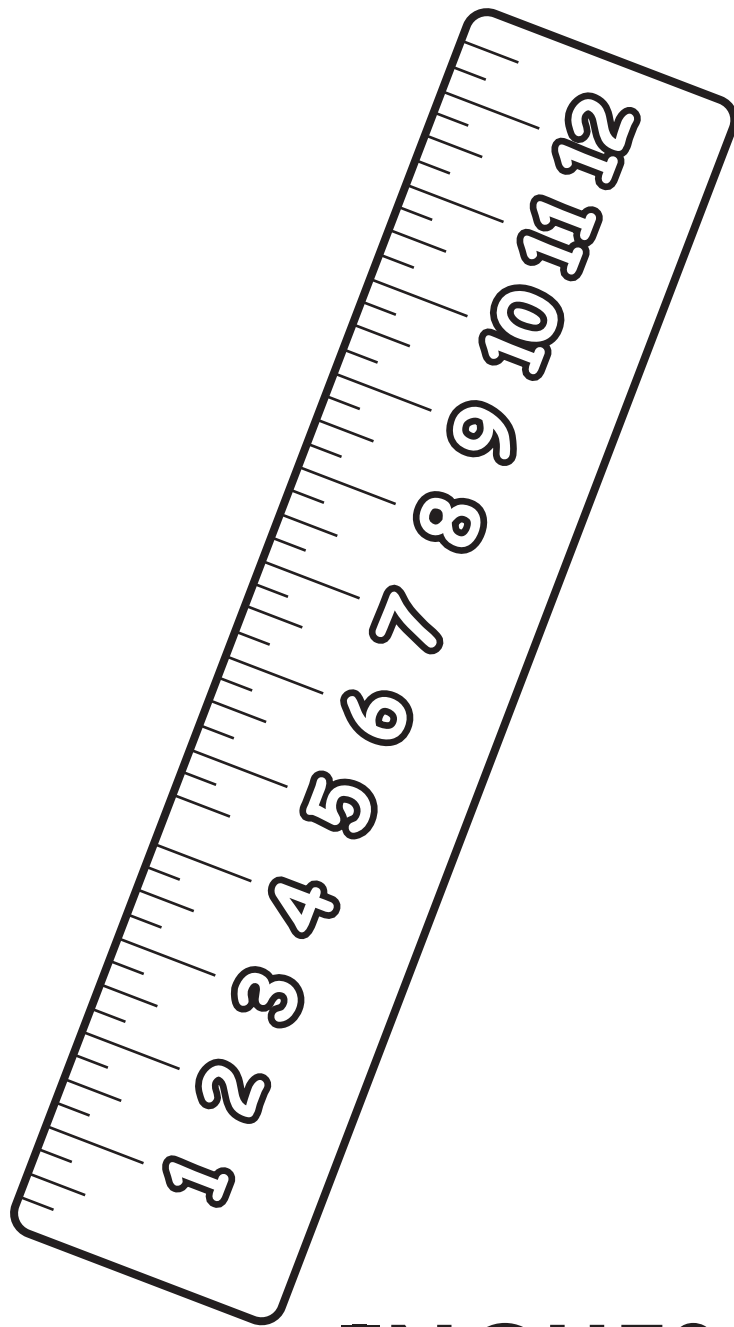


Iggy uses ink on letter **I**

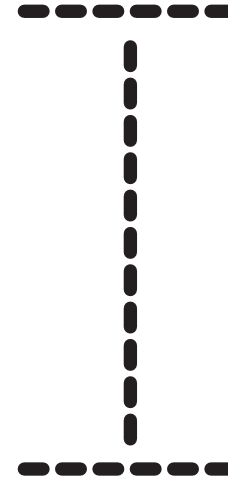


and is green like **IVY**

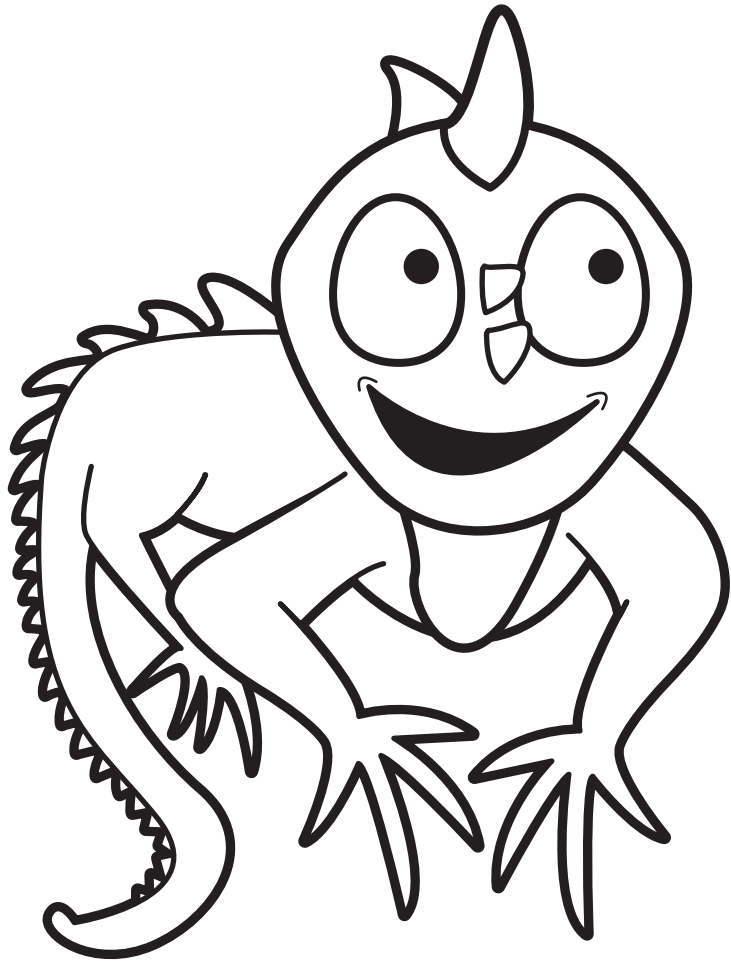




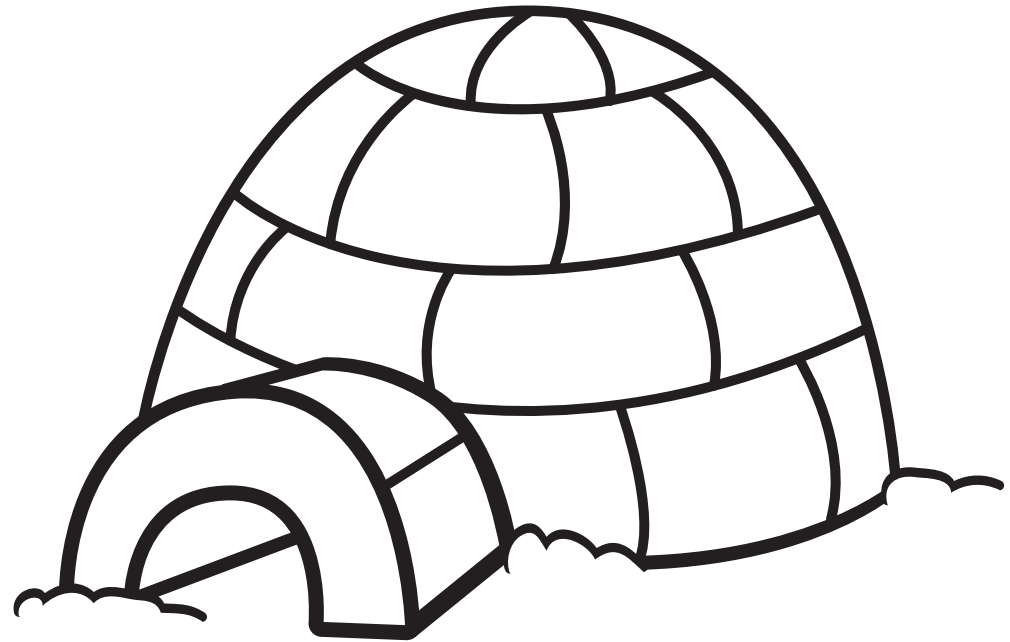
Iggy is 12 **INCHES**



Handwriting practice lines consisting of four sets of horizontal lines. Each set includes a solid top line, a dashed middle line, and a solid bottom line, providing a guide for letter height and placement.



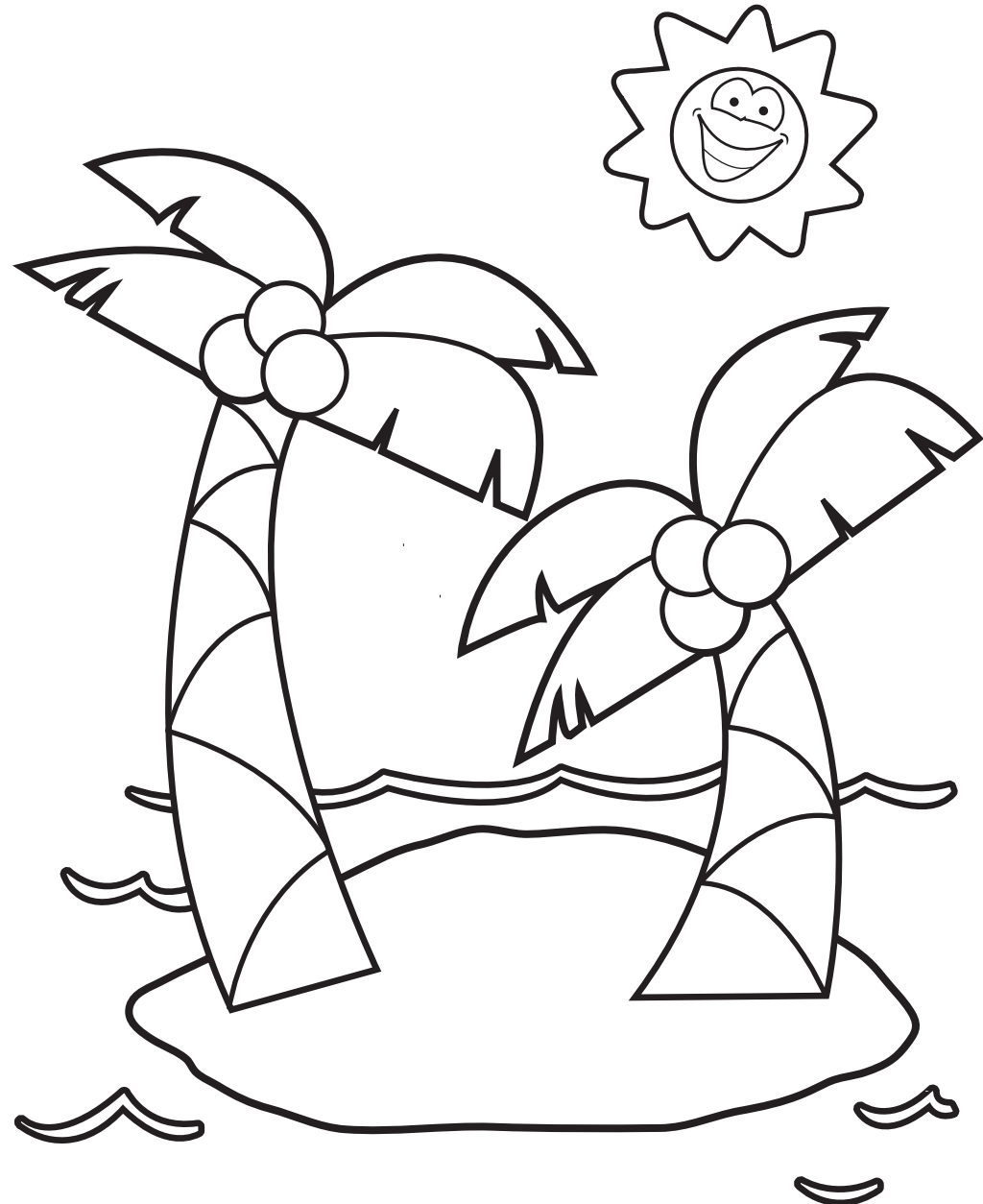
Iggy the **IGUANA**



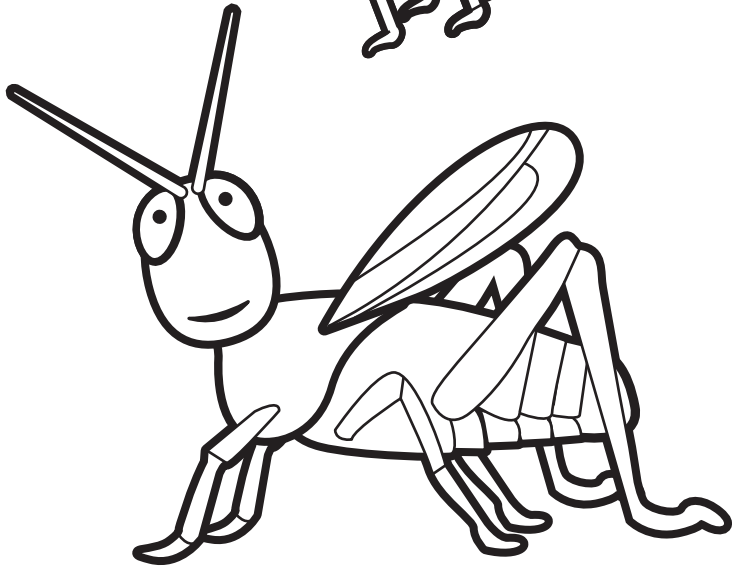
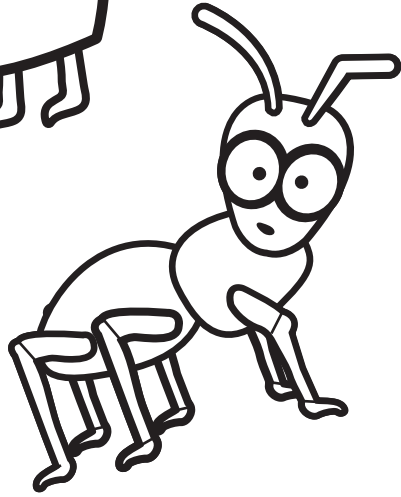
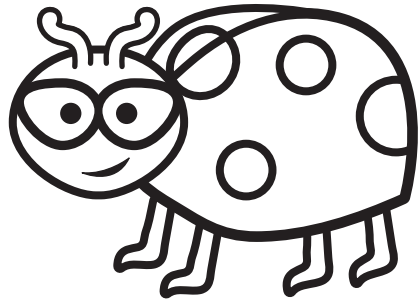
in an **IGLOO**



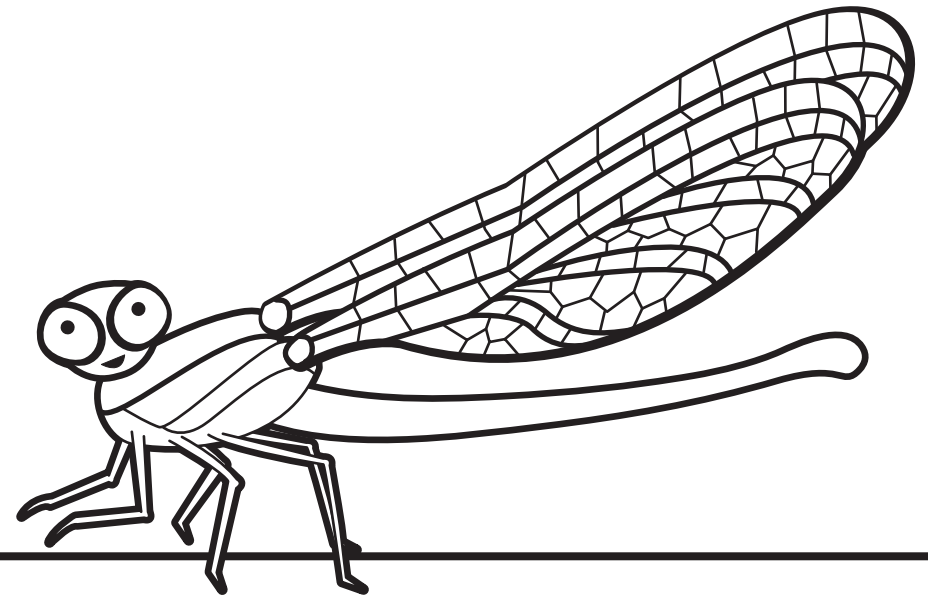
Iggy eats **ICE** cream



lives on an **ISLAND**



Iggy likes **INSECTS**

A large, empty rectangular box with a black border, intended for a child to draw their own insect.